



Supply Chain Visibility Discussion

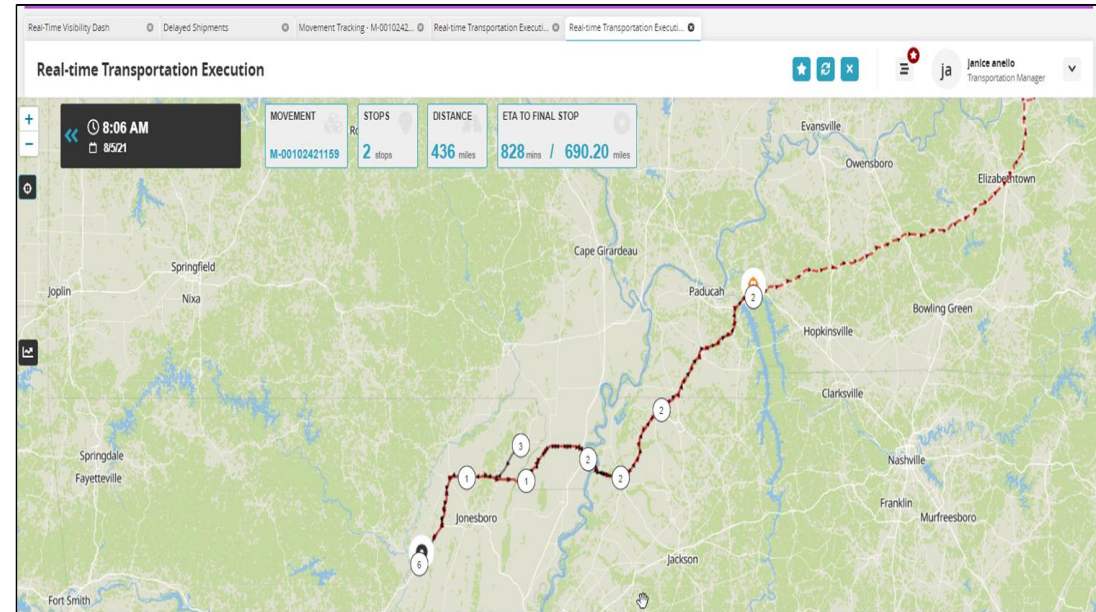
## Agenda:

- Leadership Update (5 min)
- Sourcing Update (5 min)
- Requirements Update (5 min)
- Q&A (15 min)

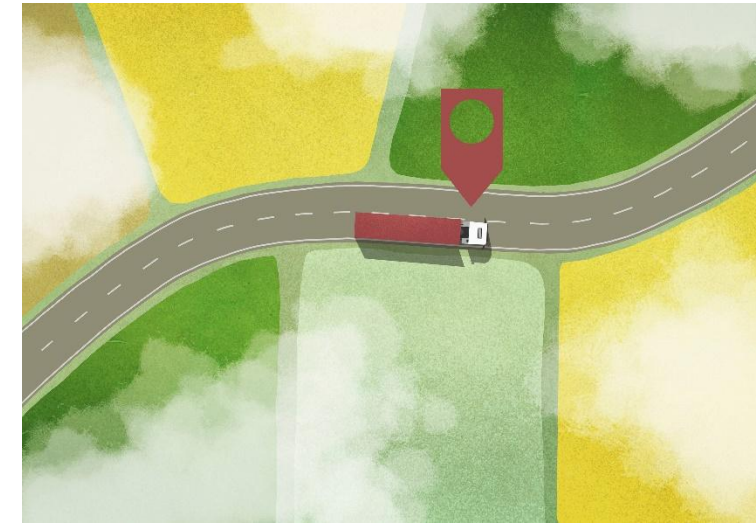
## The Reason for Change?

Kroger believes that there is true value creation for not only our customers but also our carriers, and suppliers as we continue to become a more connected and compliant supply chain. To continue our supply chain successes, Kroger has updated location & temperature tracking requirements that will only enhance our ability to provide fresh, full products to our customers.

- Proactive Receiving Operations
- End-to-End Supply Chain Visibility of the Products
- Dynamic Supply & Demand Planning
- Increasing visibility of inbound products will only enhance Kroger & Suppliers ability to stay agile
- Opportunities for improved QA communications between Supplier and Kroger



- Sourcing is working closely with the KTC on the project to Ensure Location & Temperature Data is being shared per the Expected Timelines
- The Sharing of Location, and later Temperature, is a requirement of the 2025 National TL RFP set to launch in early April with Effective Date July 20, 2025
- Kroger will utilize One Network Reporting in Data Analysis



## What is Changing?

- Effective May 1<sup>st</sup>, 2025, Kroger will require near real-time location updates on all inbound deliveries to Kroger DCs.
- Effective November 1<sup>st</sup>, 2025, Kroger will require near real-time temperature updates on all inbound deliveries to Kroger DCs

## In-Scope

All POs tendered through One Network or Itrade that are greater than 10,000 lbs. or 750 cube.

## Out of Scope

- Small Parcel & Direct Store Delivery
- Ambient loads are not required to send temperature data
- Produce, Meat, & Floral Suppliers are not required to send temperature data to One Network

## Actions

- Visit [kroger.onenetwork.com](http://kroger.onenetwork.com)
- Select preferred integration method
- One Network team will reach out to you

## Requirements

- Data must be sent every 15 minutes.
- Preferred Carrier Connection– EDI.



## Kroger Program Questions

[contractsupplychain@kroger.com](mailto:contractsupplychain@kroger.com)



## Technical Integration Questions

[edisupport@onenetwork.com](mailto:edisupport@onenetwork.com)



## Need information about One Network

[partnersuccess@onenetwork.com](mailto:partnersuccess@onenetwork.com)