



One Network
Enterprises™



Supply Chain Visibility

End to End Supply Chain Visibility

Kroger & One Network

January 2024



Meet your speakers



Raul Bujalil

VP Supply Chain Strategy



Eric Rodriguez

VP Retail



Alex Mathews

Supply Chain Manager



AGENDA

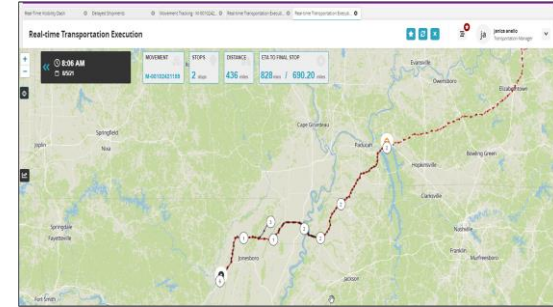
- **EXECUTIVE SUMMARY**
- **KROGER & ONE: DIGITAL SUPPLY CHAIN NETWORK**
- **PARTNER BENEFITS**
- **WHAT IS CHANGING**
- **CURRENT ACTIONS**
- **IN SCOPE / OUT OF SCOPE**
- **TIMELINE & MILESTONES**
- **PARTNER RESOURCES**

EXECUTIVE SUMMARY



The Reason for Change?

- Having an End-to-End Supply Chain Visibility of the products we sell to our customers is paramount
- Increasing the visibility of inbound products will only enhance Kroger & Suppliers ability to stay agile
- Kroger has promised to deliver “Fresh and Full” products to its customers
- Reporting and analytics available to Kroger’s Carrier and Supplier partners gaining actionable insight to problems



Location Tracking

- Proactive DC receiving operations
- Eliminates the requirement for researching and communicating the location of the load
- Dynamic Promotional & Demand Planning
- Enables causative research, KPIs, and inbound analytics

Temperature Tracking

- End-to-End temp monitoring visibility will allow Kroger to deliver on its freshness promise
- This data will improve Kroger's current Cold-Chain Compliance program.
- Opportunities for improved QA communications between Supplier and Kroger

Auto-Scheduling

- This functionality eliminates the scheduling step in One Network. Auto-scheduling will enable Suppliers/Carriers to instantly secure capacity at Kroger DCs as POs are created.

Auto Re-scheduling

- Real-time location visibility of tractors will enable One Network to “Auto-Reschedule” an inbound late load based on predictive arrival.



KROGER & ONE: DIGITAL SUPPLY CHAIN NETWORK



Internally and Externally Siloed:

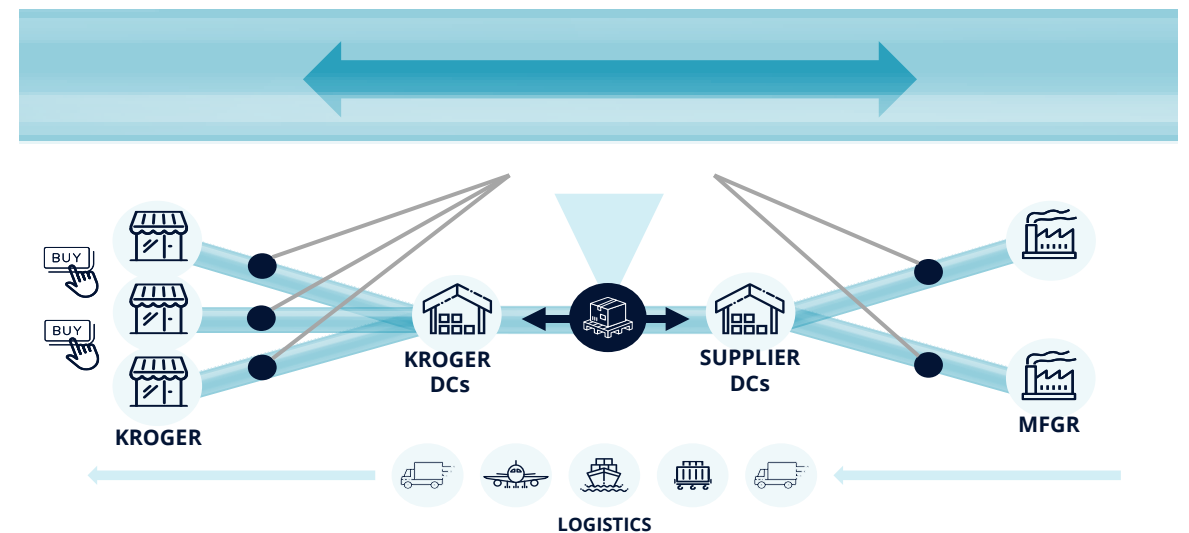
- Numerous disconnected systems
- Embedded systems lead-time ~2 to 3 days
- Inaccurate, static lead-times
- Manual appointment scheduling – 20-minutes per appt.
- Suppliers lack visibility to controlled loads
- Elongated driver turnaround time
- Limited visibility to underlying issues impacting OTD



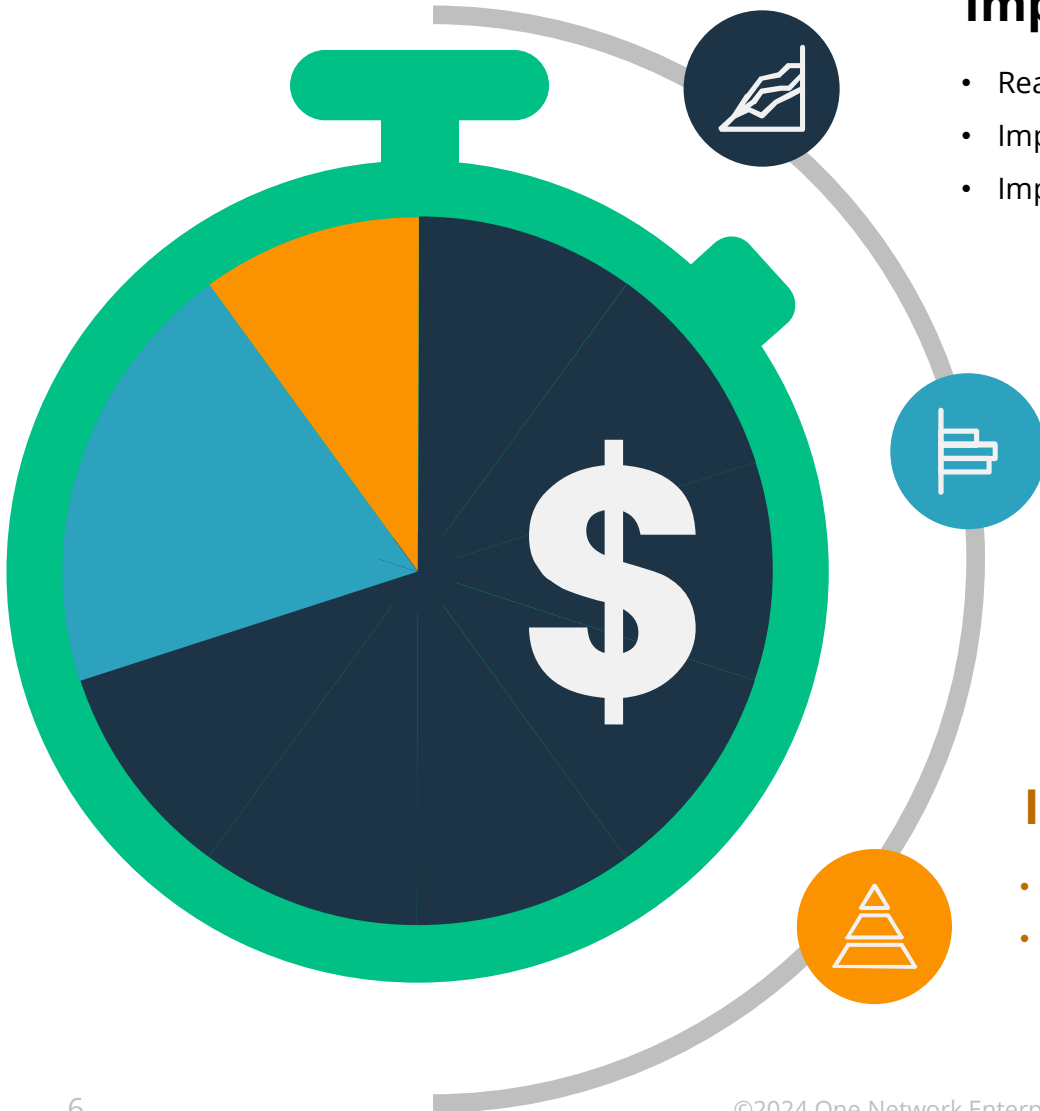
Digital Supply Chain Network

Glass Pipeline:

- Single Version Of Truth for all partners
- Real time data driving processes and collaboration
- Visibility into Shipments and real-time tracking
- Propagation of issues up stream & downstream
- Multi-party execution of all scheduling and full visibility of carrier
- Real-time location tracking and temperature data



PARTNERS BENEFITS – *Reduced lead-times and variability*



Improved Visibility

- Real-time visibility to schedule problems enables better corrective action during the execution.
- Improved OTD performance reduces SLA penalties
- Improved promotion effectiveness

Improved Asset/Carrier Utilization

- Optimizing schedules enables the improvement of transportation assets
- Improved opportunities to consolidate LTL loads
- Reduce dwell times, demurrage fees, and detention fees
- Reduce driver turnaround times

Improved Human Capital Efficiency

- Real-time visibility reduces manual status updates across trading partners, i.e., calls, and emails
- Supplier team or carriers will be logging into the system and confirming the pre-scheduled appointment reserved to firm up the schedule

WHAT IS CHANGING

Changes for You

- Changes to Appointment Process
 - Confirmation of the Appointment
- Telematics and Temp Data
 - You or your carriers send location and temperature data
- Reporting and Analytics
 - Enhanced view of Shipment status
 - Measure on-time, in-full performance
 - Enable automated alerting services on orders, forecasts, shipments and problems that require action.

Neo Dashboard

Alert Summary

Problem Summary

Shipment State Summary

Late Delivery Score Card

Alerts Inbox

Priority	Mail	Date	Ref No	Subscription	Subject
High	Yes	02/12/21 11:15 AM		ShipmentEvent_Tendered_Carrier	Shipment # "CreateShip40082019933" tendered
High	Yes	02/12/21 11:15 AM		MovementEvent_Tendered_Carrier	Movement # "M-CreateShip40082019933" tendered (SpotBid)
High	Yes	02/12/21 11:13 AM		MovementEvent_Tendered_Carrier	Movement # "M-CreateShip40082019932" tendered (SpotBid)
High	Yes	02/12/21 11:13 AM		ShipmentEvent_Tendered_Carrier	Shipment # "CreateShip40082019932" tendered

Real-time Transportation Execution

ASSETS: Total 152 (0, 0, 3, 149)

DELAYED: Total 8 (7, 0, 1)

ON SCHEDULE: Total 144 (28, 116)

Map showing locations: Lubbock, Wichita Falls, Denton, Tyler, Shreveport, Monroe, Abilene, San Angelo, Odessa, San Antonio, Del Rio, Houston, Galveston, Beaumont, Lafayette, Baton Rouge, New Orleans, Mobile, Pensacola.

Asset ID: [Input field]

Driver Contact: Service Level

Carrier: CarrierA

Current Location: 30.75 / -97.55 (1 of 2)

Next Stop: CustomerA-Austin D... (111)

Travel Direction: Eastbound

Movement: M-6985

Commodity: [Input field]

Pickup: Apr 11, 2019 12:34 pm CDT

Delivery: Apr 12, 2019 10:34 am CST

CURRENT ACTIONS



WHAT TO DO RIGHT NOW?

1. Sign and return **both** ELD and Temperature Letters to contractssupplychain@kroger.com
2. Fill out Kroger's 2 min, ELD Survey <https://forms.microsoft.com/r/sXsgT1x7cv>
3. Fill out Kroger's 2 min, Temperature Survey <https://forms.microsoft.com/r/JKqZs80b93>
4. If not a member, [Join the Network](#)
5. Fill out below form and start process to send ELD Data:
 - [Carriers and Brokers](#)
 - [Suppliers](#)

In Scope vs. Out of Scope

In Scope: Any Kroger or Vendor Managed shipments tendered through One Network or Itrade.

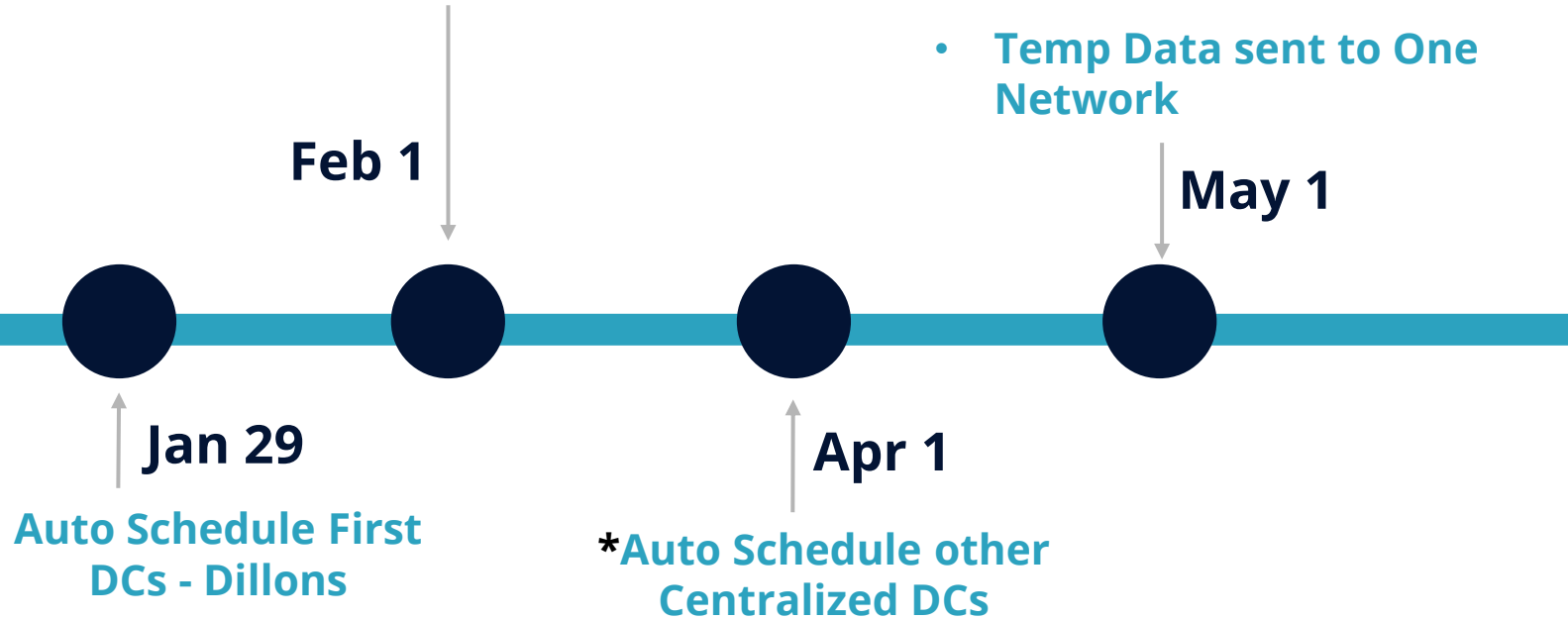
Out of Scope: “ X ”

	Location (ELD)	Temperature
Ambient Loads	✓	✗
Direct Store Deliveries (DSD)	✗	✗
Less than Truckload (LTL)	✗	✗
Small Parcel	✗	✗
All Produce suppliers	✓	✗
All Case-ready meat suppliers	✓	✗

Kroger’s Definition of FTL: If the total amount of product(s) shipping to Kroger facilities exceed 10,000 lbs. OR 750 cube

TIMELINE and MILESTONES

- Sign up w/ One Network
- ELD Data Sent to One Network
- Start Process to send Temp Data



- Temp Data sent to One Network



***Auto-scheduling roll-out dates are subject to change**

KROGER ONE NETWORK PORTAL



<https://kroger.onenetwork.com>

[Home](#) [Carrier Services](#) [Supplier Services](#) [Join the Network](#)

Need Training?

Explore our Training Materials and Integration Specifications

Have a Question? We have answers.

Explore our FAQs [Frequently Asked Questions \(FAQ\)](#)



Smart Control Tower (Telematics IOT and Auto Scheduling)

Today's retail and transportation markets demand constant innovation to remain competitive. In order to adapt, The Kroger Co. ("Kroger") has initiated numerous Transportation Visibility programs to dramatically improve how we do business together. We strive to become a customer of choice with you and recognize our current technology capabilities are one of the barriers to achieving that status.

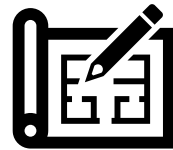


CONTACT US



Kroger Program Questions

contractsupplychain@kroger.com



Technical Integration Questions

edisupport@onenetwork.com



Need information about One Network

partnerservices@onenetwork.com

Q & A

THANK YOU!